



Total Logistics Coordinator for the 21st Century



Ohnami Corporation

[www.0073.co.jp](http://www.0073.co.jp)

zero-zero-seven-three



# About us

Since its foundation in 1949, our company has contributed to the building of infrastructures at home and abroad through the transportation of heavy loads and large cargoes, on-site transportation of steel blocks in shipyards, transportation of steel structures including bridges, and transportation of plant machinery for our customers.

We have expanded into many logistics markets such as transportation, warehousing, packaging, coastal shipping, transportation and installation, customs clearing, international combined transportation, and insurance.

Our business field has been developing in Japan and globally. Through our expert knowledge of logistics and successful performance record over a number of years, we offer total logistics that meet our customers' requirements with prompt service, precise performance, and safety first.

In 2004 we obtained ISO14001 certification. In our logistics business we have been working to improve our environment management system by promoting environmental conservation, effective utilization of resources, energy saving, and green procurement, among other efforts.

## Message from the president



With long-term experience we have achieved a large number of successful results in the transportation of heavy loads and large cargoes at home. With this performance record our company is about to expand into the field of international logistics.

We will promote more expansion of our service network mainly in the logistic business in booming areas such as China and Southeast Asia.

Integrating our domestic services including warehouses, heavy machinery and storage facilities and international logistics services, we will develop our services concerning international combined transportation to meet our customers' requirements.

To achieve this goal, we will execute the transportation method that is best suited for the new epoch of the 21st century. We will focus on management reforms to realize prompt service, minimized cost, precise performance, and safety first.

We look forward to your continued support.

Ohnami Corporation  
Representative Director & President

**Masajiro Shimizu**

- |  |  |
|--|--|
| <b>Nov. 1949</b> Founded as Ohnami Transportation and Warehouses Corporation.  | <b>Jul. 1998</b> Changed the company name to Ohnami Corporation.                                       |
| <b>Nov. 1960</b> Started warehouse operations.                                 | <b>Mar. 1999</b> Obtained license for customs broker business, and started services as customs broker. |
| <b>May 1963</b> Listed on the Second Section of the Osaka Securities Exchange. | <b>Sep. 2004</b> Corporate vessel, Daiichi Ohnami (Ohnami No. 1), started service.                     |
| <b>Jun. 1963</b> Started coastal shipping services.                            | <b>Nov. 2004</b> Obtained ISO14001 certification.  |
| <b>May 1965</b> Opened Sakai office.   | <b>Apr. 2005</b> Corporate vessel, Daini Ohnami (Ohnami No. 2), started service.                       |
| <b>Jun. 1969</b> Affiliated Ohnami Land Transportation.                        | <b>Apr. 2014</b> Corporate vessel, Daisan Ohnami (Ohnami No. 3), started service.                      |
| <b>Feb. 1971</b> Opened Warehouse No. 7 in Sakai office.                       | <b>Feb. 2016</b> Wholly owned by Hitachi Zosen Corporation   |
| <b>Dec. 1971</b> Obtained licenses for construction business.                  |  |
| <b>Jul. 1976</b> Started packaging services.                                   |  |

# Our Services

## Transportation



With our motto "Service to customers comes first," we handle large, general and special cargoes, from planning transportation to installation, promptly, reliably and safely.

## Warehousing Loading and Unloading



We provide services of storage of general cargoes, mainly steel products, and harbor loading and unloading. Our well-managed services have earned our customers' confidence.

## Domestic Coaster Service



We can arrange the best vehicle to safely and efficiently transport large cargoes, such as like iron structures, providing satisfaction and earning the trust of our customers.

## Export/Import Custom Clearance



Clearance agents with specialized knowledge and rich experience provide suggestions for the most economical transportation method and help customers reduce their cost.

## Packaging



Taking advantage of our knowledge and skills of packaging, we have proved and are proving quite a few records of special packaging and packaging for export of generic machinery, plant establishments and heavy machinery.

## Transportation and Installation



We provide comprehensive services from the transportation of machinery and steel structures and their installation, on a safety-first basis.

**Ohnami  
Corporation  
as  
Total Logistics  
Coordinator  
for  
21st Century**

## International Combined Transport



We can meet any needs of our customers, from customs clearing for import and export to international combined transport and inland transportation with trucks or railways as part of the destination.

## Moving



From the relocation of factories or offices to the moving of people, with our motto of rapid and reliable services, we provide services that satisfy customers.



# Our Experience and Facilities

## • Land Transportation

We own various types of vehicles, primarily handling heavy, large and general cargoes. With our motto of safety, speed and service, we provide comprehensive services from the planning of transportation to the installation.



Transportation and installation of an engine of ship



Land transportation of a large boiler



Land transportation of steel plate



Land transportation of activated carbon

## • Warehouse and Harbor Loading and Unloading

Utilizing our company's private berth in Osaka, we perform warehousing and harbor loading and unloading of steel stock and steel products for major steel companies, and we receive high evaluations from our customers. We have two overhead cranes. Using these cranes, we can carry cargo weighing up to 55 tons, and store indoors.



Our company warehouse



Crane for harbor loading and unloading



Magnet lifting for steel



Computerized multilevel storage

## • Marine Transportation

Aside from three company's vessels, we utilize various types of vessels including barges, to provide safe and efficient coaster transportation of heavy cargo, such as plant establishments and steel structures, taking advantage of our in-depth knowledge and experience.



Company vessel (Ohnami No.2)



Company vessel (Ohnami No.1)



Transportation of structures using barges



Safe and reliable transportation

## • Construction

Utilizing our large cranes (150 to 220 tons, among others), we provide installation of large machinery such as industrial machinery and plant establishments, installation and construction of large structures such as lamp posts and blocks of highways, taking advantage of our long-established expertise and in depth skill. We are expanding our business operations in the field of installation of precision machinery.



Installation of a crane



Installation of segment for tunnel



Crane vehicle



Installation for a wind power station



Our company logo and symbol show the Ohnami corporate philosophy.

The number "0073" can be read as "Ohnami" in Japanese, which is the name of our company.

The three lines are the symbols for safety, prompt service and customer satisfaction. The blue represents the sea and reliability.

## Corporate Philosophy

Ohnami Corporation provides the knowledge we have accumulated over time and experience to our society through our logistics business activities to meet the needs of our customers.

To achieve our fundamental philosophy "contribution to society," We have tried and continue to try to raise corporate values, developing vigorous business activities.

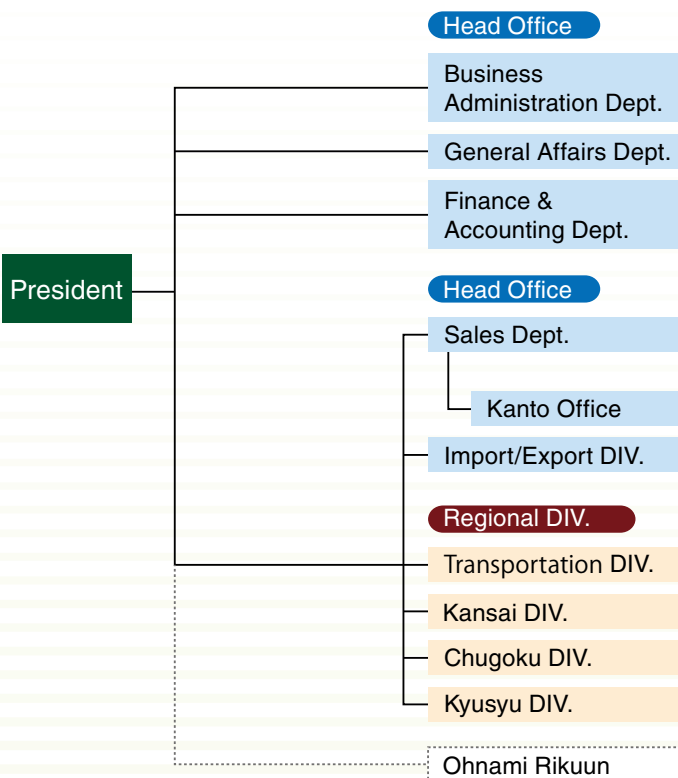
## Code of Conduct

- (1) Complying with regulations
- (2) Respecting people
- (3) Establishing a healthy relationship with customers and business partners
- (4) Proactively disclosing information
- (5) Preserving the environment
- (6) Living harmoniously with society
- (7) Appropriately managing information
- (8) Rejecting antisocial forces

## Organization

### Head Office

### Division & Department



## Overview

Established: November 29, 1949  
 Head Office: 6-33, Edobori 2-Chome, Nishi-Ku, Osaka City, Japan 550-0002

Capital issued: 525 million yen (Approx. 6.2 million US\$)

Employees: 246 persons

Scope of business:

- Warehousing & Loading/Unloading
- Transportation
- Export, import & Custom clearance
- Domestic coastal service
- Construction (Machinery installation)
- Moving
- Liability, life insurance agency
- International multimodal transportation

Homepage: <http://www.0073.co.jp>



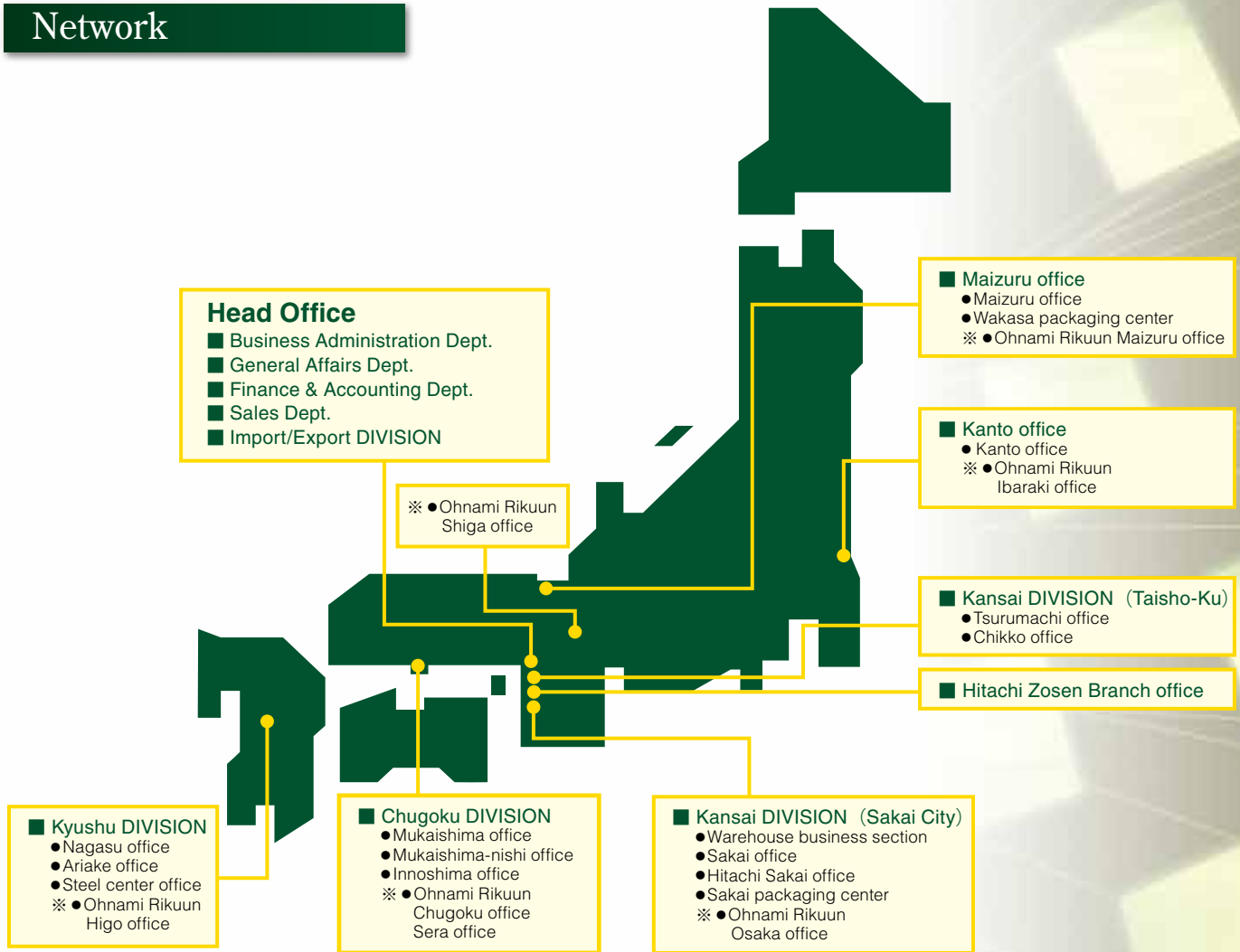
## Major Customer

Daio Paper Corporation  
 Hitachi Zosen Corporation  
 Hitachi Plant Technologies, Ltd.  
 JFE Shoji Trade Co., Ltd.  
 JP Steel Plantech Co.  
 Kamigumi Co., Ltd.

Kobe Steel Ltd.  
 Kobelco Logistics Corporation  
 Komatsu Logistics Corporation  
 Nakajima Sangyo Co., Ltd.  
 Nippon Steel & Sumitomo Metal Corporation  
 Nippon Steel & Sumikin Logistics Co., Ltd.

Marubeni Itochu Steel Inc.  
 Metal One Corporation  
 Sumitomo Heavy Industries Ltd.  
 Unicarriers Corporation  
 Toyo Kohan Co., Ltd.  
 Japan Marine United Corporation

# Network



## Operations Bases

<b>Head Office</b>	6-33 Edobori 2-Chome, Nishi-Ku, Osaka City, Japan 550-0002 TEL 81-6-6445-0073 FAX 81-6-6445-9431	<b>Mukaishima -nishi</b>	111, Mukaishima-Cho, Onomichi City, Hiroshima Pref. Japan 722-0073 TEL 81-848-45-0181 FAX 81-848-45-1590
<b>Sales Dept.</b>	TEL 81-6-6445-9462 FAX 81-6-6445-9432 81-6-6445-9458	<b>Innoshima</b>	2418 Habu-Cho, Innoshima, Onomichi City, Hiroshima Pref. Japan 722-2323 TEL 81-845-22-2101 FAX 81-845-22-2104
<b>Export/Import Div.</b>	TEL 81-6-6445-9464 FAX 81-6-6445-9492	<b>Nagasu</b>	4, Oazameishihama, Nagasu-Cho, Tamana-Gun Kumamoto Pref. Japan 869-0111 TEL 81-968-78-3025 FAX 81-968-78-6307
<b>Area Divisions</b>			
<b>Sakai</b>	1-5, Chikko-Shinmachi, Nishi-Ku, Sakai City Osaka Pref. Japan 592-8331 TEL 81-72-241-1361 FAX 81-72-241-1364	<b>Ariake</b>	1, Oazaariake, Nagasu-Cho, Tamana-Gun Kumamoto Pref. Japan 869-0113 TEL 81-968-78-1306 FAX 81-968-78-1304
<b>Tsurumachi</b>	20-58, Tsurumachi 2-Chome, Taisho-Ku, Osaka City, Japan 551-0023 TEL 81-6-6552-2667 FAX 81-6-6554-3114	<b>Steel center</b>	10, Oazameishihama, Nagasu-Cho, Tamana-Gun Kumamoto Pref. Japan 869-0111 TEL 81-968-78-0997 FAX 81-968-78-1497
<b>Hitachi/Sakai</b>	1-5-1, Chikko-Shinmachi, Nishi-Ku, Sakai City Osaka Pref. Japan 592-8331 TEL 81-72-245-6447 FAX 81-72-245-6424	<b>Kanto</b>	3-19-40, Nishioshima, Hitachinaka City Ibaraki Pref. Japan 312-0041 TEL 81-29-274-0734 FAX 81-29-352-3880
<b>Chikko</b>	2-11, Funamachi 2-Chome, Taisho-Ku Osaka City, Japan 551-0022 TEL 81-6-6555-0073 FAX 81-6-6555-0074	<b>Hitachi Zosen Branch office</b>	1-7-89, Nanko-Kita, Suminoe-Ku, Osaka City, Japan 559-8559 TEL 81-6-6569-0058 FAX 81-6-6569-0047
<b>Maizuru</b>	1180, Amarube-Shimo, Maizuru City, Kyoto, Japan 625-0087 TEL 81-773-62-2118 FAX 81-773-62-2162		
<b>Wakasa</b>	2-8, Takamori, Takahama-Cho, Ooi-Gun, Fukui Pref. Japan 919-2200 TEL 81-770-72-7320 FAX 81-770-72-7320		
<b>Mukaishima</b>	14755, Mukaihigashi-Cho, Onomichi City, Hiroshima Pref. Japan 722-0062 TEL 81-848-44-3012 FAX 81-848-44-3765		